

Superior Health Foundation

# ANNUAL REPORT



# 2021



# REAL CHANGE *through* TRANSFORMATIVE PARTNERSHIPS

## TABLE OF CONTENTS

LETTER FROM BOARD PRESIDENT AND EXECUTIVE DIRECTOR . . . . .	3
KEY HIGHLIGHTS. . . . .	4
2021 . . . . .	4
SHF BOARD OF DIRECTORS . . . . .	4
MISSION, VISION AND STAFF . . . . .	5
MEET THE TEAM. . . . .	5
IMPACT . . . . .	6
PROACTIVE GRANT GIVING . . . . .	6
GRANTS AT WORK. . . . .	7
GRANTS. . . . .	8
YEAR ENDED DECEMBER 31, 2021. . . . .	8
EVENTS. . . . .	9
ANNUAL GALA. . . . .	9
PAINTING THE PENINSULA <i>PINK</i> . . . . .	10
ANNUAL GOLF OUTING . . . . .	10
FINANCIALS. . . . .	11
AMOUNT OF SHF GRANTS PROVIDED IN 2021 . . . . .	11
SHF GRANT GIVING. . . . .	11
SHF 2021 EXPENSES. . . . .	11
DONOR LIST. . . . .	12

## LETTER FROM BOARD PRESIDENT AND EXECUTIVE DIRECTOR

*The 2021 year began with continued health restrictions and many of us were experiencing feelings of fear, grief, loneliness and frustration.*

*With your support, we moved forward in caring for our community with patience, perseverance and a commitment to the safety and well-being of each other.*

*Despite the challenges 2021 presented us, our driving force was asking ourselves how we can best serve our community, the Upper Peninsula of Michigan.*

*We are abundantly grateful that we were able to hold our three annual fundraising events, and it was so great to see each other again! The generosity of local businesses and individual donors helped us raise record-breaking funding to provide grants to many well-deserving, health-centered, non-profits across the U.P.*

*We are honored and grateful for your generous support as we addressed food insecurity and programs and projects that assisted with mental, emotional and physical health.*

*In 2021 we kicked off our monthly donor campaign. We are delighted with the response from people all across the region as we strive to address unmet healthcare needs.*

*We are emerging from 2021 filled with optimism, faith and conviction to work together to adapt to difficult and challenging times.*

*There are numerous health-centered needs across the Upper Peninsula. We continue to seek solutions.*

*Thank you for being a part of our Superior Health Foundation family. We are humbly grateful and thankful for YOU.*



Sheri Davie, MPA  
Board President



Jim LaJoie, MPA  
Executive Director



## KEY HIGHLIGHTS

2021

49  
GRANTS

TOTAL GRANTS  
\$1,386,041



98%



444  
donors

3 ANNUAL  
EVENTS

TOTAL GRANTS  
INCREASE  
compared to 2020

100%

of your gift goes to the program of your choice

## SHF BOARD OF DIRECTORS



Bruce Seely, PhD  
Director  
Houghton



Nicole Rowe  
Director  
Ironwood



Joan Haara  
Director  
Michigamme



Kris Leonard  
Director  
Iron Mountain



Carolyn Severson  
Director  
Champion



Angela Victorson  
Director  
Bark River



Kara Katona, CPA  
Secretary/Treasurer  
Negaunee



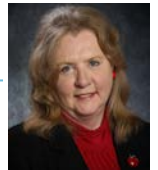
Sara Giles  
Director  
Manistique



Tyler LaPlaunt  
Director  
Marquette



Daniel Arnold, MD  
Director  
Marquette



Sheri Davie  
President  
Marquette



John Marshall  
Vice President  
Marquette



Bryan Dixon, MD  
Director  
Marquette

## OUR MISSION

TO ASSIST WITH UNMET HEALTHCARE NEEDS, WITH HEALTH EDUCATION, AND WITH PROGRAMS AND RESEARCH ON PREVENTING ILLNESS AND PROMOTING HEALTH THROUGHOUT THE UPPER PENINSULA.

## OUR VISION

TO IMPROVE THE HEALTH OF THE RESIDENTS OF THE UPPER PENINSULA.

### MEET THE TEAM



**Jim LaJoie**  
Executive Director



**Leah Berthiaume**  
Executive Assistant



**Laura Jarvi**  
Accountant and  
Database/Grants  
Coordinator



**Lynn Hill**  
Community Engagement  
& Annual Giving  
Coordinator



**Rachel Sheppard**  
Event Specialist



**Lauren Sweppy**  
Student Intern





## IMPACT

### PROACTIVE GRANT GIVING

#### FOOD INSECURITY PROACTIVE GRANTS

For 2021 and 2022, SHF is addressing food insecurity issues with proactive grant dollars. SHF and its funding partners are committing nearly \$1.5 million in funding over two years.

Our funding partners include:

- BLUE CROSS BLUE SHIELD OF MICHIGAN FOUNDATION
- COMMUNITY FOUNDATION OF MARQUETTE COUNTY
- M.E. DAVENPORT FOUNDATION
- MICHIGAN HEALTH ENDOWMENT FUND
- WEST END HEALTH FOUNDATION

SHF provided funding to Feeding America for Mobile Food Pantries across the U.P.



#### PARTRIDGE CREEK FARM

SHF awarded grants to Partridge Creek Farm for its Farm-to-School Summer Camp program. Partridge Creek Farm and MARESA engaged youth in a week of enriching, healthy learning that inspired their food choices and provided many opportunities for physical activity.



**FOOD as MEDICINE**  
Prescription for Health

**PRESCRIPTION FOR HEALTH**  
Utilizing a prescription for health model, this nutrition intervention is designed to address and improve food security for low-income residents who currently have or are at risk of developing a chronic health condition.

**REFERRAL SYSTEM**  
Participants are referred by health care practitioners. Eligible participants receive vouchers which can be redeemed for fresh fruits and vegetables at local farmers markets.

**INFRASTRUCTURE DEVELOPMENT**  
Cold food storage units on participating farms will help increase access to local, nutritious and culturally appropriate foods. The extended growing season will increase capacity and economic impact of local producers.

**NUTRITION EDUCATION**  
Nutrition education options are available to program participants year-round with an opportunity to earn additional produce vouchers.

**EVALUATION**  
A robust evaluation will be conducted to demonstrate Prescription for Health outcomes which may influence policy.

The Upper Peninsula Food as Medicine program is generously funded by the Superior Health Foundation of Marquette County.

**SUPERIOR**  
Health Foundation  
MARQUETTE COUNTY





## IMPACT

### GRANTS AT WORK

*"Having a Ramp Program available through MCHFH has been a huge asset to our community. There are only a handful of organizations that build ramps in the area and all of them have more projects than they can get to in a short build season. The same can be said for any general contractor willing to take on a small project, if one can be found. Add in an aging population and old mining houses not designed for accessibility and it is easy to see how important it is to support any and all ramp programs. Every individual served in this program was so grateful for the assistance. The ramp meant freedom and independence, and the ability to get out to doctors' appointments and be a part of their community again. Thank you for your support of our program, we really appreciate it, as did all of those we helped in 2021."*

Marquette County Habitat for Humanity

*"We are so grateful to the SHF for making the equipment grants available to our organization. The dollars spent for the durable medical equipment items will help hundreds of patients in our community over the next several years and, more importantly, will allow families the ability to stay in the comfort of their home at the end-of-life. Thank you!"*

Lake Superior Life Care & Hospice



#### INDIGENT CARE FUND

SHF awarded Trillium House with Indigent Care Funds to help patients cover out-of-pocket expenses.

#### EQUIPMENT GRANT

SHF awarded a \$1,359.99 Equipment Fund grant to Ontonagon Village Housing Commission for the purchase of exercise machines for its residents. Because of the low annual income of the residents, they are not able to pay for a membership to a local gym or purchase their own gym equipment. The equipment helps the residents become healthier, both physically and mentally, and more mobile. The equipment is available 24 hours a day, seven days a week.



#### EQUIPMENT GRANT

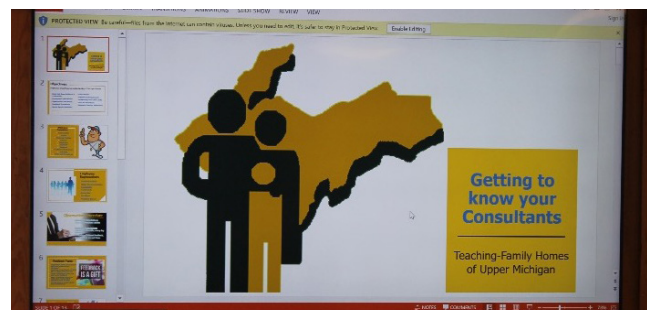
SHF gave a \$2,500 Equipment Fund grant to Courage Incorporated so that they could purchase a used fishing boat, motor and trailer. The boat is lower profile, which makes it easier for their clients with disabilities to get in and out, providing a safer and more satisfactory experience.



#### SPRING GRANT FOR DAR

In Spring 2021, SHF awarded a \$7,500 Spring Grant to DAR Boys&Girls Club in Menominee for its Emotional Wellness Head to Toe program.

Superior Health Foundation gave a \$2,500 Equipment Fund grant to Teaching Family Homes for its Telehealth Expansion project.



## GRANTS

YEAR ENDED DECEMBER 31, 2021

Pilot Project/Equipment Grants	
Organization	Amount
Bay Cliff Health Camp	\$1,250.00
Camp New Day UP	\$1,800.00
Courage Incorporated	\$2,500.00
Dickinson County Communities That Care	\$1,500.00
Eversight	\$2,312.40
Friends of the Wolf Club	\$2,319.95
Gogebic County Forestry & Parks Commission	\$2,500.00
Lake Superior Life Care and Hospice	\$1,765.69
Mercy EMS, Inc	\$2,344.65
Mercy EMS, Inc	\$2,500.00
Michigan Breastfeeding Network	\$1,900.00
MSU-CHM	\$2,500.00
Omega House	\$2,120.00
Ontonagon Village Housing Commission	\$1,359.99
Partridge Creek Farm, Inc.	\$1,491.00
Superior Housing Solutions	\$2,250.00
Teaching Family Homes of the Upper Peninsula	\$2,500.00
<b>TOTAL</b>	<b>\$34,913.68</b>

Spring and Fall Grants	
Organization	Amount
Bay Cliff Health Camp	\$6,000.00
Big Brothers Big Sisters of Marquette & Alger Counties	\$9,807.80
Caregiver Incentive Project	\$37,365.00
Community Foundation of Marquette County	\$20,000.00
Community Foundation of the Upper Peninsula	\$10,250.00
DAR Boys and Girls Club	\$7,500.00
Feeding America West Michigan	\$22,650.00
Great Lakes Recovery Center	\$40,181.00
Great Lakes Recovery Center	\$15,000.00
Marquette County Habitat for Humanity	\$8,500.00
Marquette Mountain Ski Patrol	\$5,000.00
Michigan Technological University	\$9,940.00
SAIL	\$6,000.00
Schoolcraft Memorial Hospital	\$13,383.00
Superior Health Support System	\$12,950.00
Superior Housing Solutions	\$7,584.00
Trillium House	\$4,044.00
<b>TOTAL</b>	<b>\$236,154.80</b>

Proactive Grants	
Organization	Amount
Feeding America West Michigan	\$31,160.00
Partridge Creek Farm	\$106,427.50
UPCAP	\$322,388.37
Upper Peninsula Veterans Community Action Team	\$50,000.00
<b>TOTAL</b>	<b>\$509,975.87</b>

Indigent Care Grants	
Organization	Amount
Great Lakes Recovery Centers, Inc.	\$5,000.00
Marquette County Habitat for Humanity	\$5,000.00
Trillium House	\$5,000.00
<b>TOTAL</b>	<b>\$15,000.00</b>

Mental Health for Children Grants	
Organization	Amount
Catholic Social Services of the Upper Peninsula	\$30,000.00
Lakes Community Health Center, Inc.	\$25,000.00
Marquette-Alger RESA	\$25,000.00
YMCA of Marquette County	\$19,996.00
<b>TOTAL</b>	<b>\$99,996.00</b>

Michigan Opioid Partnership Grants (MOP)	
Organization	Amount
Eastern Upper Peninsula Opioid Response Consortium	\$150,000.00
Great Lakes Recovery Centers, Inc.	\$150,000.00
Superior Housing Solutions	\$40,000.00
Western Upper Peninsula Health Department	\$150,000.00
<b>TOTAL</b>	<b>\$490,000.00</b>

<b>GRAND TOTAL</b>	<b>\$1,386,040.35</b>
--------------------	-----------------------

## SUPERIOR HEALTH FOUNDATION GRANTS YEAR 2021

January 2021



July 2021



June 2021

December 2021



**SPRING**

**6 grants**  
**\$126,446**



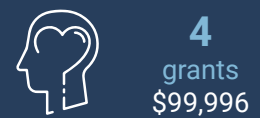
**FALL**

**11 grants**  
**\$109,709**

INDIGENT



MENTAL HEALTH



PROACTIVE



MOP



**TOTAL**  
**\$1,386,041**



## EVENTS

***The Superior Health Foundation (SHF)** is a non-profit organization providing grant funding to health-centered non-profits across the entire Upper Peninsula. Being a non-profit, we are continuously filled with such gratitude for the many businesses and individual donors who support our work and our fundraising efforts.*

***We cannot do what we do without YOU!***

*We have **three** fundraising events each year that help us raise awareness of our mission and, most importantly, raise awareness about non-profit work that assists so many of us on our health journey.*

*The funding we raise helps provide additional grants across the Upper Peninsula as we bridge the gap between people who need help and those who can help.*

***Thank you for your support.***

### ANNUAL GALA

SHF held its 10th annual gala on Saturday, September 11th, 2021, in the ballrooms of the Northern Center on the campus of Northern Michigan University. Our gala partner this year was Dial Help. Dial Help has been rooted in the Upper Peninsula since 1971. They provide crisis intervention and support Communities That Care (also known as CTC), an evidence-based prevention model that helps lower rates of youth substance use, delinquency, depression, and other issues that need our continued attention and support. Dial Help was awarded \$10,620 at the gala. The event netted \$100,350.17.



## EVENTS

*"THERE IS ALWAYS LIGHT. IF ONLY WE'RE BRAVE ENOUGH TO SEE IT. IF ONLY WE'RE BRAVE ENOUGH TO BE IT."*

AMANDA GORMAN

### PAINTING THE PENINSULA PINK

Painting the Peninsula Pink is a month-long fundraising event held each October to help raise money for the Upper Peninsula-wide SHF Breast Health Fund. This funding helps men and women across the U.P. with out-of-pocket breast health expenses not otherwise covered by insurance. Each year our goal is to partner with a school district in one of Upper Michigan's 15 counties. This year our partnership was with the Wakefield and Bessemer Gogebic Miners football cooperative. We are so grateful for the many businesses that have their own **PINK** fundraising events throughout the month of October to support this fund. Net proceeds were \$20,889.63, with a portion going directly to the Bessemer Area Schools and Wakefield-Marenisco Schools to help support their health-centered needs.



### ANNUAL GOLF OUTING

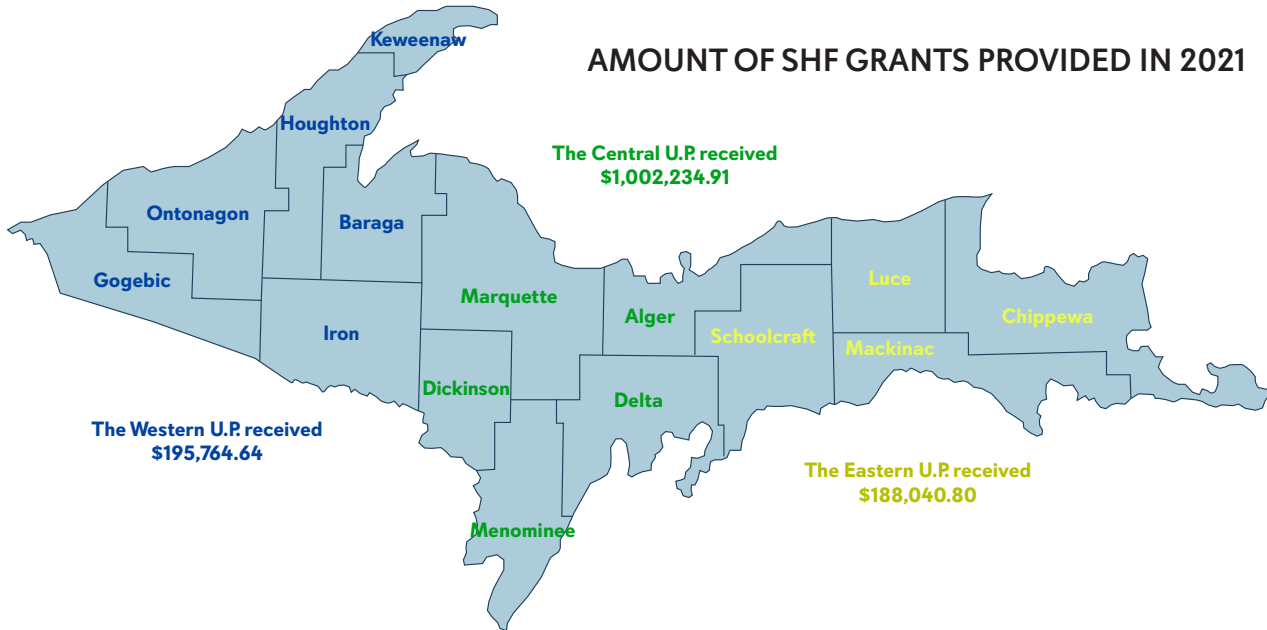
The Superior Health Foundation (SHF) held its annual golf outing on Friday, June 18, 2021, at the Red Fox Run Golf Course in Gwinn. Each year SHF has a health-centered non-profit partner who participates with us at the golf outing. This year we were honored to partner with Camp UPeninsulin. Camp UPeninsulin is a non-profit summer camp for youth with type 1 diabetes. This fundraising event provides the opportunity to help raise money for our partner organization while raising awareness of the service they provide to the community. SHF presented \$5,260 to Camp UPeninsulin. The event netted \$23,838.43.



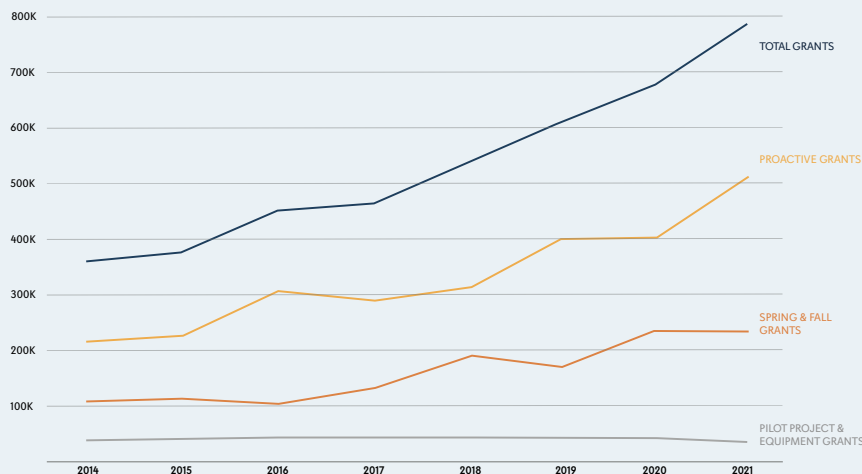


## FINANCIALS

### AMOUNT OF SHF GRANTS PROVIDED IN 2021



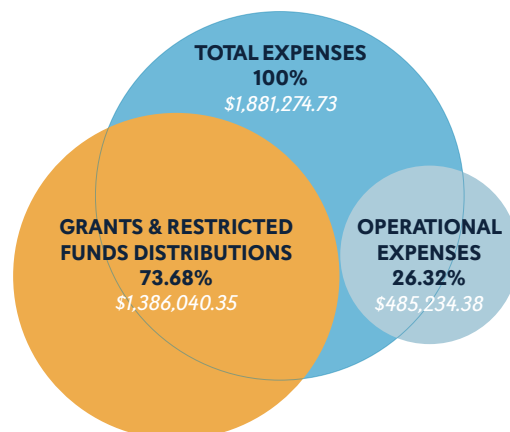
### SHF GRANT GIVING



### SHF 2021 EXPENSES

SHF operational expenses are primarily funded from SHF's operational fund.

That means when you give a charitable gift to SHF, **100% OF YOUR GIFT GOES TO THE PROGRAM OF YOUR CHOICE!**



## DONOR LIST

**“THE GREATNESS OF A COMMUNITY IS MOST ACCURATELY MEASURED BY THE COMPASSIONATE ACTIONS OF ITS MEMBERS.”  
CORETTA SCOTT KING**

A J Pit Stop Bar & Grill	Judi Brugman	Mr. Bob Cowell & Kathleen Olivier	Escape Marquette
Neil & Tricia Aaberg	Byma Chiropractic	Mary Craik	EUPTA - Drummon Island Ferry
AccuTrust Bookkeeping & Tax Services	Cal's Party Store	Crane Berry Farm	eXp Realty, LLC
Advanced Center for Orthopedics and Plastic Surgery	Calumet Electronics	Crock and Rocker	Fairfield by Marriott
Aflac	Peter & Theresa Camilli	Culver's	Farm Bureau Insurance
Shelly Aho	Camp New Day	Curio Design Studio	Field & Forage Gift Shop
Terry & Kim Alworden	Carol Campagna	Sheri Curtice-Young	First Bank
American Transmission Company	Campfire Coffee	Dagenais Foundation	First National Bank & Trust Company
Amy Stoll Photography	CapTrust Advisors	Dalgord Beef Farms	First National Bank of Iron Mountain
Jean Anderson	Caregiver Incentive Project	Dan Perkins Construction, Inc.	Fitzgeralds
Ray Anderson	Carole Pence Photography	Jessica Darcy	John Fornetti
Michael Ansell - Edward Jones	Casa Calabria	Bill & Sheri Davie	44 North
Anytime Fitness	Catholic Social Services of the Upper Peninsula	Davie Multimedia	Cassie Fossitt
Drs. Daniel & Constance Arnold	Chamerlines Ole Forrest Inn	Sally Davis & Dave Campana	Fox Marquette, Subaru, Ford, Chevy
Ashley Furniture	Champion Glass MQT	Linda DeGabriele	Fresh Water Tavern (Terrace)
Aspirus, Inc.	Chopp-Kallio Insurance Agency	Nicole Delfavero	Functional Behavior Services
Aubrees Pizzeria & Grill	Deanna Christesen	Delft Bistro	Elizabeth Fyle
Aubrey Moore Designs	Clarkson Eye Care - Coldwater	Dennis H. Smith Consulting	G. D. Nitz Associates, Inc.
Auto Armor	Cleveland Cliffs Iron Company	DeTour Reef Lighthouse Tour	Jean Gerbig
Chase Averill	Closner Construction	DeTour's Huron Street Inn/Paddler's Point	Get Fresh Communications, LLC
Bobbie Ayotte	Kyle Closs	Dial Help, Inc.	Getz's
B Taylor Creative	Club 28	Dickinson County Healthcare System	Dan & Sara Giles
Babycakes	CND Law	Dr. J. Bryan & Megan Dixon	Marlene Gilpin
Carl & Kay Bammert	Margaret Comfort	Peter J. Domas	Glow Sculpting Spa
Bark River Knives	Communities That Care (Alger)	Donckers	Doug Gordon - Edward Jones
Barrel + Beam	Communities That Care (Chippewa)	Sharon Dorrity	Kristine Goupille
Behennaed	Communities That Care (Delta)	Doulas of Marquette	Great Lakes Recovery Centers
Brittany Bennetts	Communities That Care (Dickinson)	Mary Dowling	Great North Auto Wash
Regina Bergh	Communities That Care (Mackinac)	Down Wind Sports	Ellen & Dan Greer
Sue Bernier	Communities That Care (Marquette)	Drifa	Monica Grismer Lemerond
Leah Berthiaume	Community Foundation for Delta County	Drummond Island Tall Ship	Dr. Michael & Helen Grossman
Best Western River Front Inn-Marinette	Community Foundation of Marquette County	Dry Dock	Paul & Joan Haara
Big Boy	Community Foundation of the Upper Peninsula	Dunegrass Co.	Craig Hakala
Rochelle Birmann	Congress Pizzas	Dunham's Sports	Deanna Harju
Taylor Birmann	Lauren Connolly	Econo Foods	Audrey Harvey
Blackrocks Brewery	Contrast Coffee Company	Elevated Financial	Healthy Youth Coalition of Marinette & Menominee Counties
Blue Cross Blue Shield of Michigan	Megan Coombs	Emberlight	Helen Newberry Joy Hospital
Blue Cross Blue Shield of Michigan Foundation	Melissa Copenhaver	Embers Credit Union	Christine Henry-DuCharme
David & Sandy Bonsall	Copper Country Ford	Embroidery Wear House	Hiawatha Music Festival
Boss Snow Plow	Copper Peak	End of the Road Winery	Delight Hill
Angeline Bouley	Courtyard by Marriott	Ted Erickson	Lynn Hill



Mia Hill	Judith Krause	Dr. Daniel Mazzuchi	Carole Pence
Dr.J. Marc & Rene Himes	Dr. Catherine Kroll	McDonald & Wolf PLLC	Peninsula Family Dentistry
Holiday Station Stores	Christina Krugh	Thomas McFadden - Edward Jones	Peninsula Glass and Auto Sales, LLC
Hollyhock Hideaway Vacation Rental	Laura Krznarich	Sue McInnis	Peninsula Pharmacy
Tracey Holt	Lac Vieux Desert	Media Brew Communications	David Pepin
Hometown Family Restaurant	LaCrosse & Associates CPAs	Medical Laboratories of Marquette, PC	Pepsi Cola of Houghton
Mitch Horton	LaDolce Video and Design	Nick Meier	Steven Perucco
HOPE Animal Assisted Crisis Response	Lagniappe/The Courtyards	Meijer	Christine Pesola
Household Appliance	Jim & Kim LaJoie	Menards	Heather Picotte
Huron Jewel	Lake Superior Community Partnership	D. Keith Meyers	Jim Picotte
Huron Mountain Bakery	Lake Superior Life Care & Hospice	Marilyn Meyers	Melissa Picotte
IncredibleBank	Landmark Inn	Michigan Health & Hospital Association	The Picotte Family
The Inn at Bay Harbor	Mark & Meghan Lane	Michigan Health Endowment Fund	Pine Mountain Ski Resort
Inspiring Roots	Tyler LaPlaunt	Michigan Made	Poet's Pet Parlor
Iron Bay Market Place	Rosemary Larson	Michigan Transportation Connection, Inc.	Dave Poirier
Island Resort & Casino	Lasco Development Corporation	Midtown Bakery & Café	Todd Poquette
J & J Charter Services	Last Resort Cottages	Nanette Miller	Portage Health Foundation
Jackson's Pit	The Leather and Gift Shop	Pam Mrazek	Portage Lake Cabins
Amy Jacobson	Leigh's Garden Winery	MSU College of Human Medicine	Provident Health Foundation
Lisa & Daniel Jahnke	Stephen & Kris Leonard	Munising Memorial Hospital	Quality Car Care
Jamieson Orthodontics	Victoria Leonhardt	Munising Visitors Bureau	Queen City Running
Jandron's Fine Jewelry	Peter & Kimberly LeTourneau	Mustard Seed	Kaylee Quertermus
Matthew & Laura Jarvi	Lauren Letto, Attorney at Law	My Lady Quilts	Radio Results Network
Brent Jensen	Mary Letts	Rose Myllyla	Range Bank
Jewels of the Heart	Steven & Lea Leuthold	MyMichigan Health	Rare Earth Café
Joe's Cakes	Levata Sleep	William & Theresa Nelson	Dr. Chintamaneni B. Rao
Joe's Seafood and Grill	Dr. Eric T. Lincke	William Nelson	Ben & Kitty Raymond
Jan Johnson	Lincoln Dental Marquette	Tiffany Nicholas	Red Fox Run
Lauri Johnson	Lions of Michigan District 10	Nicolet Bank	Megan Reilly Holm
Linda Johnson	Little Brothers Friends of the Elderly	Dr. G. Michael Nidiffer	REMAX 1st Realty
Lisa Johnson	Local Lines	George & Ann Niemi	Jonathan Ringel
Tracy Johnson	Loraine Mussatti Licensed Health Insurance Agent/Counselor	Ken Niemisto	Riverside Auto Group
Kelly Johnson-Sager	Mr. & Mrs. Tom Luckey	906 Family Dentistry	Roam Inn/Tracy's
Just Believe	Lucky's Steakhouse	906 Sports Bar & Grill	Nicholas & Loret Roberts
Bill Kallio	The Ludington Grill	Northern Michigan University	Ronnie Roberts
Eli Karttunen	Lutey's Flower Shop	Northern Waters Casino	Vincent Rose
Cathy Kass-Aten	Lutey's Heritage Motors	Northwestern Mutual	Rotary Club - Marquette West
Chris & Kara Katona	Clare Lutgen	Karl Numinen	Nicole Rowe
Peter & Audrey Kaufman	Nikki Lynott	Gregory Nyen	Tracy & Dave Rowe
Angie Kaurala	M. E. Davenport Foundation	Ojibwa Casino & Resort	Douglas & Kathryn Russell
Tammy Kauranen	Tricia Magreta	Ore Dock Brewing Company	Ellen Sargent
Diane Kent	Makela Pollack & Ahonen PLLC	Orlich Office Complex LLC	Dr. Aaron P. Scholnik
Dr. James Keplinger	Mares-Z-Doats	OSF St. Francis Hospital	Schoolcraft Memorial Hospital
Keweenaw Brewing Company	Marquette Golf Club	Bradley & Krysti Ostermeyer	Schoolcraft Tourism and Commerce
Keweenaw Chamber of Commerce	Marquette Food Co-op	Eric Paad	Paul Schumacher
Keweenaw Coffee	Marquette Meats	James Pann	Dr. & Mrs. Bruce Seely
Michele Khouli	John & Donna Marshall	Garyn Partanen	Semco Energy, Inc.
Esther Kivisto	Massage Therapy by Melanie	Ardeshir M. Payan	Carrie Sevarns
Amanda Knaffla	Richard Matrella	Chris Peled	Burns & Carolyn Severson

Rachel Sheppard	The Studio Hair Design	Travel Marquette	Walk in the Park
The Shipping Shop	Super One	Traverse City Wine & Beer Tours	Walmart
Shops of Marquette, LLC	Superior Alliance for Independent Living	TruNorth Federal Credit Union	War Memorial Hospital
Dr. William & Rita Short	Superior Express Car Wash	Megan Tsupros	Washington Shoe Store
Shunk Furniture	Superior Extrusion, Inc.	231/Dia De Los Tacos	Wattsson & Wattsson Jewelers
David & Nancy Skoog	Andy Swentik	UP Health System	Wells Fargo Home Mortgage
Luanne Skrenes	Lauren Sweppy	UP Rehab Services	West End Health Foundation
Sleighmans	Swick Home Services	Upper Great Lakes Family Health Center	Cynthia Whitehouse
Dennis H. Smith	Kara Szember	Upper Peninsula Health Plan, LLC	Jean Whitehouse
Joy Smith	Tadych's Foods	Upper Peninsula Managed Care, LLC	Whitney's Famous Bloody Mary Mix
Sol Azteca	Tailored CPA	Upper Peninsula State Bank	Willey's Tire Shop
Michael Spalding	Tara's Tinctures, Tonics & Teas	Tom Van Ess	WJMN
Spruce: Wax & Skin	Terrace Bay Hotel	Vangos	WLUC TV6
Michael St. John	Ronald Tervo	VAST	Wood Jewelers
Maria St. Ours	Bob Tervonen	The Vault	Wooden Nickel
Dr. & Mrs. Richard Stanchina	Ron Tervonen	Velodrome	WoodTrust
State Farm - Applekamp	Thomas Theater Group	William Verrette	YMCA of Marquette County
Steinhaus	Thrivent Financial - Craig Etelamaki	Veterans of Foreign Wars Wakefield Post No. 9084	Yooper Shirts
Steward & Sheridan, P.L.C.	Timberstone Golf Course	Steve & Angela Victorson	Young's Recreation
Stormy Kromer	Greg Toutant	Wakefield Historical Society	
Stucko's	Trattoria Stella	Wakefield Marenisco School District	

*thank you!*









**OUR MISSION:**

**TO ASSIST WITH UNMET HEALTHCARE NEEDS, WITH HEALTH EDUCATION, AND WITH PROGRAMS AND RESEARCH ON PREVENTING ILLNESS AND PROMOTING HEALTH THROUGHOUT THE UPPER PENINSULA**

**OUR VISION:**

**TO IMPROVE THE HEALTH OF THE RESIDENTS OF THE UPPER PENINSULA**

# **ANNUAL REPORT 2021**

**SUPERIOR HEALTH FOUNDATION**

---

121 N Front St  
Marquette, MI 49855  
(906) 225-6914

[www.superiorhealthfoundation.org](http://www.superiorhealthfoundation.org)

---